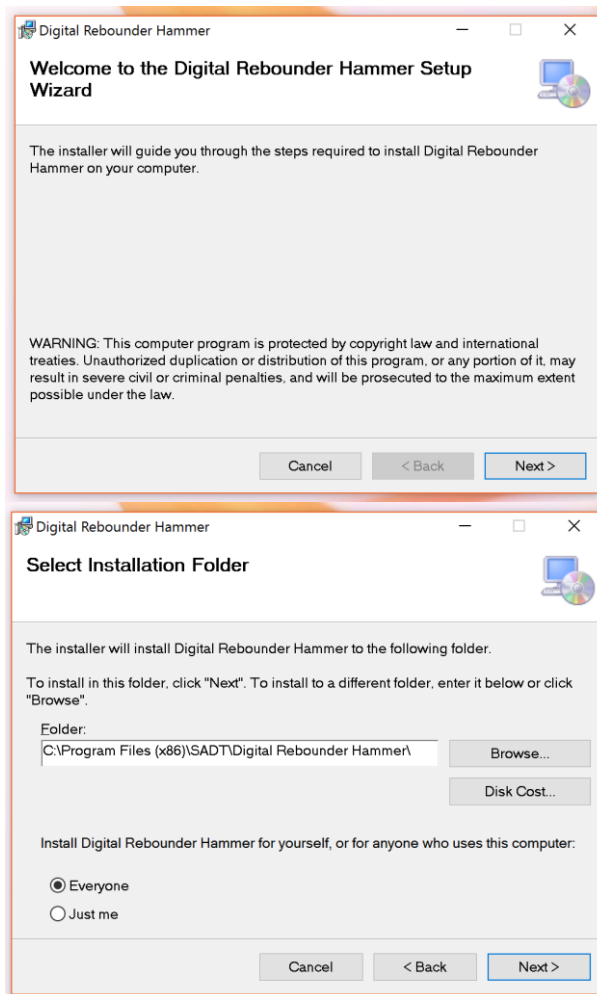
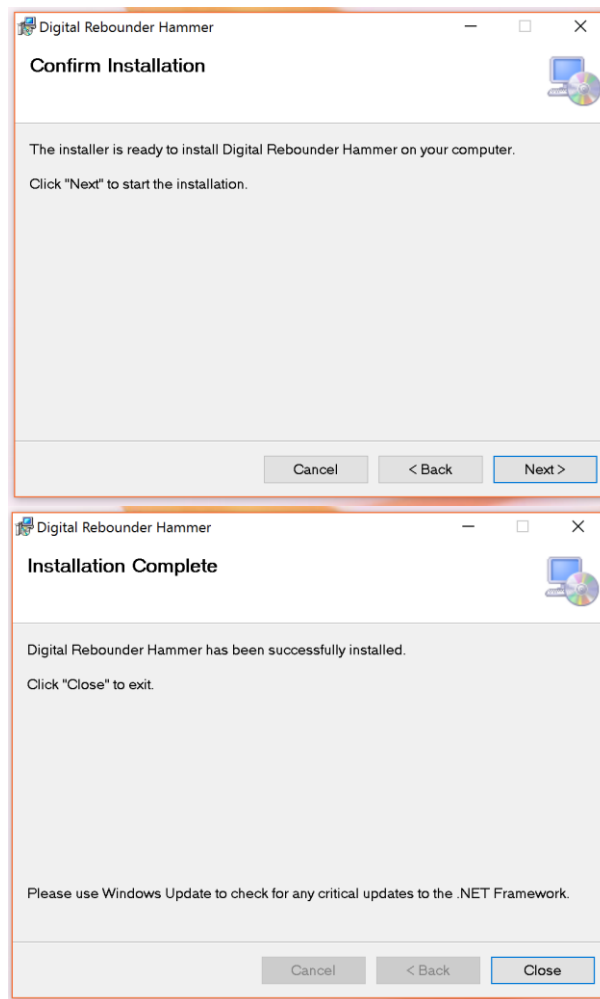


Instructions for PC Software

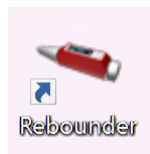
1. Install Digital Rebounder software

- Double click “Setup.exe” to install software. Follow the setup wizard till it is finished. If User Account Control displays, select “Yes” to allow installation.





- After installation, a shortcut “Rebounder” will be put on the desktop.



2. Connect digital hammer to PC and install driver

- Connect digital hammer and PC with USB cable
- Power on the digital hammer, then the system will prompt “found a new hardware”.
- The driver will be installed automatically or manually depends on different windows systems. If the driver is not installed automatically, please specify the driver folder (CDROM\Drivers) manually while the system is scanning drivers.
- After the driver is installed successfully, a new device will display in Control Panel\Hardware and Sound\Devices and Printers as below. (It might be slightly different in different systems)



Figure 1 Driver installing

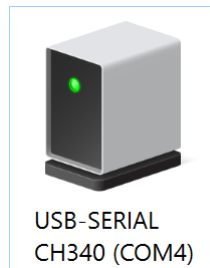
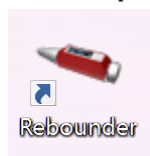


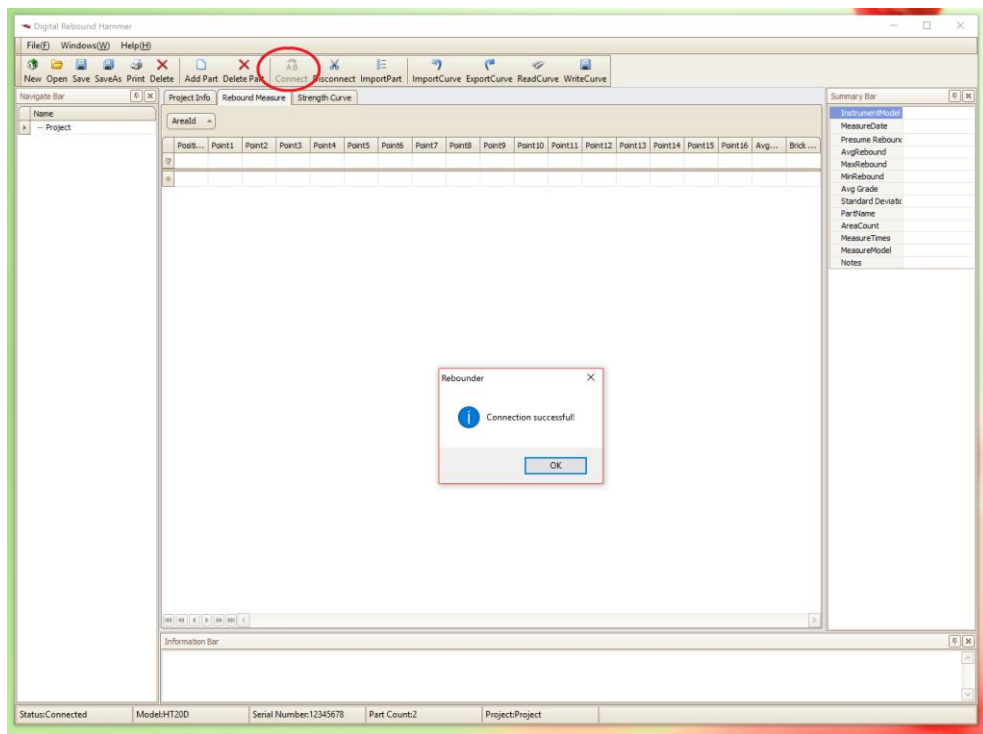
Figure 2 Driver is installed successfully

3. Start PC software

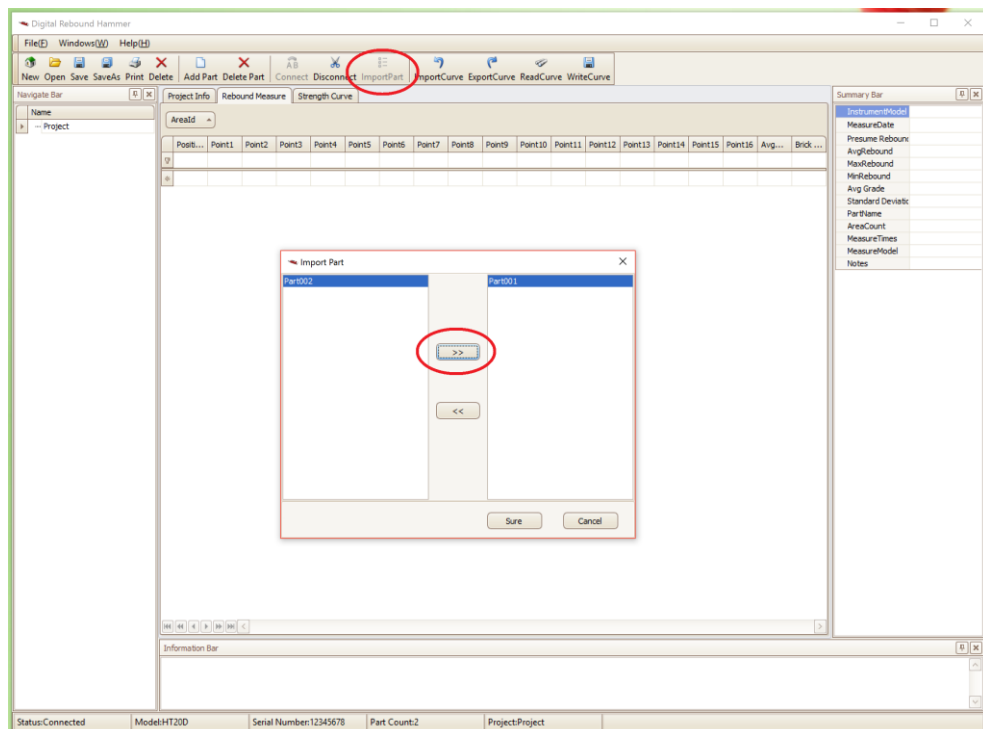
- Make sure the hammer is switched on and connected to PC by USB cable.
- Double click the shortcut “Rebounder” to run the program.



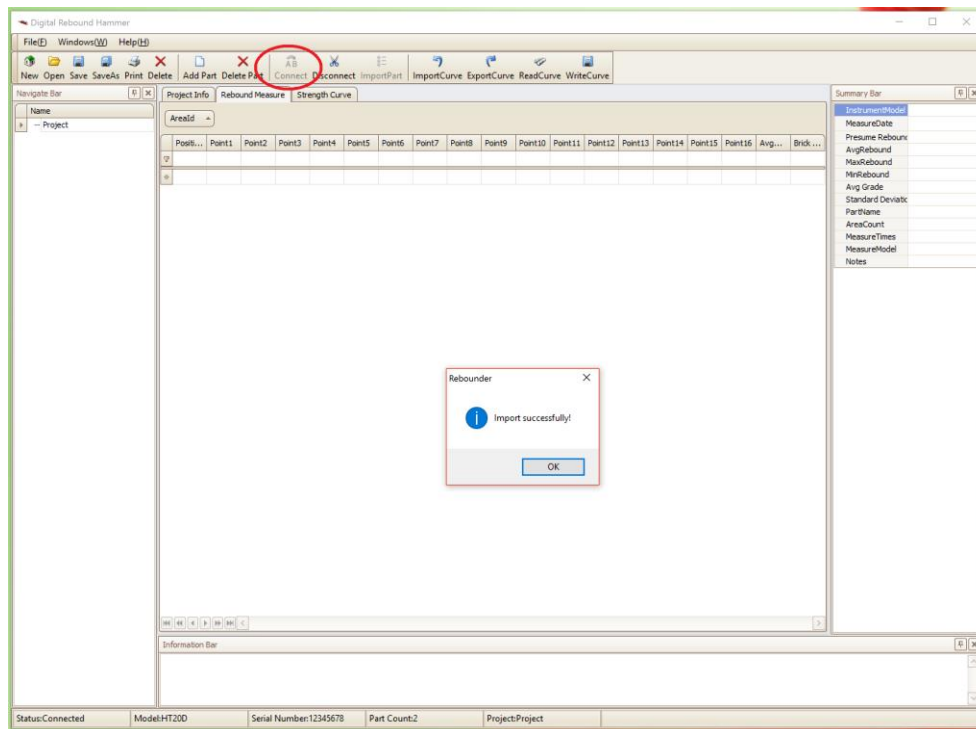
- Click the "Connect" from the toolbar to create connection between PC and tester.



- After connection is successful, the Connect button will be disabled.
- Click "ImportPart" button from the toolbar to import stored measuring data to PC. Press ">>" / "<<" buttons to select which part you need to import.



- After Import is successful, a window "Import successfully!" prompts, click "OK" to confirm.



- Then you can read measuring data from the main interface.

